

**Bid Bulletin No. 1  
25 July 2019**

**PUBLIC BIDDING NO. 19-222-5**

**Supply and Delivery of Various Furniture and Fixtures  
for the Bureau of Quarantine (BOQ)**

Issued pursuant to Sec. 22.5 of the IRR of R.A. 9184 to clarify and/or amend certain provisions in the Bidding Documents issued for this project, considering the issues raised and clarifications made by prospective bidders during the **Pre-Bid Conference** held on **July 18, 2019**, likewise, respond to bidders' written queries received within the prescriptive period for filing.

**A. AMENDMENTS**

<p><b>SECTION VII. TECHNICAL SPECIFICATIONS</b></p> <p><b>Item No. 1: CONFERENCE TABLE</b></p> <p><b>Page 74</b></p> <p><b>xxx</b></p> <ul style="list-style-type: none"><li>• <b>Metal Frames: 1.5" thickness w/ the following dimensions: 240cm width x 120cm depth x 75cm height <u>with tolerance of (±2cm) in all dimensions</u></b></li><li>• <b>Medium Density Fibre Board w/ the following measurements: (L) 300cm x (W) 120cm x (H) 75cm <u>with tolerance of (±2cm) in all dimensions</u></b></li><li>• <b><u>Table Top Thickness: One (1) inch with flat and laminated edges</u></b></li></ul> <p><b>Item No. 2: CUSTOMIZED WRITING TABLE</b></p> <p><b>Page 76</b></p> <p><b>xxx</b></p> <ul style="list-style-type: none"><li>• <b><u>Counter Top</u></b><ul style="list-style-type: none"><li>- <b><u>Dimensions: (L) 2300mm x (W) 610mm x (H) 50mm with tolerance of (±10mm) in all dimensions</u></b></li></ul></li></ul>	<p>To clarify the requirements for better understanding.</p>
---	--

*For the purpose of this Bulletin and for better understanding of its contents, the following rules shall apply: (a) ~~Double Strike-out~~ – denotes deletion; (b) Underline – denotes inclusion or new item/requirement; and "xxx" – denotes separation of phrase/s being amended from the rest of the main text.*

- **Stand**
  - **Material: double-<sup>3</sup>/<sub>4</sub> inch thick Marine Plywood on Ducco Paint finish**
  - **Dimensions: (L) 36mm x (W) 510mm x (H) 1100mm with tolerance of (±10mm) in all dimensions**
  
- **Shelves**
  - **Material: single-<sup>3</sup>/<sub>4</sub> inch thk Marine Plywood on Ducco Paint finish**
  - **Dimensions: (L) 2200mm x (W) 510mm x (H) 200mm with tolerance of (±10mm) in all dimensions**
  
- **Partition**
  - **Material: single-<sup>3</sup>/<sub>4</sub> inch thk Marine Plywood on Ducco Paint finish**
  - **Dimensions: (L) 2200mm x (W) 18mm x (H) 500mm with tolerance of (±10mm) in all dimension**
  
- **To provide PRODUCTION LAY-OUT instead of brochure during Post-Qualification**

**Item No. 3: JUNIOR EXECUTIVE TABLE**

**Page 79**

**xxx**

- **Woodgrain laminated top (beige), 30mm thick with tolerance of (±2mm)**
- **Dimensions: (W) 120cm x (D) 70cm x (H) 75cm with tolerance of (±2cm) in all dimensions**
- **Table Top Thickness: One (1) inch with flat and laminated edges**
- **With ~~one~~ two wire management hole for cables and wires on ~~one~~ two sides**

**Item No. 4: SENIOR EXECUTIVE TABLE**

**Page 81**

xxx

- **Dimensions: 150' cm. (W) x 70' cm. (D) x 75' cm. (H) with tolerance of (±2 cm.) in all dimensions**
- **Table Top Thickness: One (1) inch with flat and laminated edges**
- **With ~~one~~ two wire management hole for cables and wires on ~~one~~ two sides**
- **With glider**

**Item No. 6: SENIOR EXECUTIVE CHAIR**

**Page 85**

xxx

- **Five (5) stroke base, chrome leg**

**Item No. 7: GLASS DISPLAY CABINET**

**Page 87**

xxx

- **Dimensions: 20" L X 15" W X 71" H with tolerance of (±2") in all dimensions**
- **Top surface and bottom material: Wood or particle board, 4.25" (±0.25") thick each for top and bottom, white**
- **All glass materials should be at least 1/2" thick (±1/8")**

**Item No. 8: HORIZONTAL FILING CABINET**

**Page 89**

xxx

- **Dimensions: ~~at least~~ 18.25" D x 42" W x 65" H with tolerance of (±2") in all dimensions**

- **Three (3) Open Shelves at the top with the following dimensions: 45cm Depth x 90cm Length x 35.4cm Height with tolerance of (±2cm) in all dimensions**
- **Two (2) drawers at the bottom with the following dimensions: 45cm Depth x 90cm Length x 37cm Height with tolerance of (±2cm) in all dimensions**

**Item No. 9: FIVE (5) DRAWER LATERAL FILE CABINET**

**Page 91**

xxx

- **Dimensions: 67" H x 42" W x 19" D with tolerance of (±2") in all dimensions**

**Item No. 10: SIX DOOR LOCKER**

**Page 93**

xxx

- **Dimensions: 88cm W x 51cm D x 178cm H with tolerance of (±2cm) in all dimensions**
- **With lock set and padlock**

**Item No. 11: STEEL CABINET**

**Page 95**

xxx

- **Dimensions: 51" H x 18.5" W x 28.5" D with tolerance of (±2") in all dimensions**

**Item No. 12: THREE (3) DRAWER LATERAL FILE CABINET**

**Page 97**

xxx

- **Dimensions: 900mm W x 450mm D x 1026mm H with tolerance of (±50mm) in all dimensions**

<p><b>Item No. 14: THREE (3) SEATER OFFICE SOFA</b></p> <p><b>Page 101</b></p> <p>xxx</p> <ul style="list-style-type: none"> <li>• <b>Dimensions: 2000mm L x 900mm depth <u>with tolerance of (±50mm) in all dimensions</u></b></li> <li>• <b><del>One (1) unit with left and right side arm, one (1) unit with right side arm</del></b></li> </ul>	
---	--

All other portions of the Bidding Documents affected by these amendments shall be made to conform to the same.

Amendments/inclusions/clarifications made herein shall be considered an integral part of the Bidding Documents.

**(SGD)**  
**WEBSTER M. LAUREÑANA**  
*Chairperson, Bids and Awards Committee V*

# Technical Specifications

**LOT NO. 1** **SUPPLY AND DELIVERY OF VARIOUS FURNITURE AND FIXTURES**

**QUANTITY** **1 lot**

**APPROVED BUDGET FOR THE CONTRACT** **₱ 2,194,252.00**

**ITEM NO. 1** **: CONFERENCE TABLE**

**QUANTITY** **: 3 units**

**ABC / UNIT** **: Php 32,500.00**

**ABC FOR THE ITEM** **: Php 97,500.00**

<b>AGENCY'S SPECIFICATIONS</b>	<b>BIDDER'S STATEMENT OF COMPLIANCE</b>	<b>REFERENCE</b>
<b>Brand and Model:</b>		
• <b>Metal Frames:</b> 1.5" thickness w/ the following dimensions: 240cm width x 120cm depth x 75cm height with tolerance of (±2cm) in all dimensions		
• <b>Medium Density Fibre Board w/ the following measurements:</b> (L) 300cm x (W) 120cm x (H) 75cm with tolerance of (±2cm) in all dimensions		
• With 2 wire management/holes for cables or wires at least 100cm apart		
• <b>Table Top Thickness:</b> One (1) inch with flat and laminated edges		
• <b>Color:</b> Beige		
• <b>Warranty:</b> One year warranty on parts and service		

**I hereby certify that the statement of compliance to the foregoing technical specifications are true and correct, otherwise, if found to be false either during bid evaluation or post-qualification, the same shall give rise to automatic disqualification of our bid.**

---

Name of Company /  
Bidder

---

Signature Over Printed  
Name of Authorized  
Representative

---

Date





**ITEM NO. 2** : **CUSTOMIZED WRITING TABLE**

**QUANTITY** : **11 units (6 units – Silver Gray; 5 units – Vibrant Yellow)**

**ABC / UNIT** : **Php 45,000.00**

**ABC FOR THE ITEM** : **Php 495,000.00**

AGENCY'S SPECIFICATIONS	BIDDER'S STATEMENT OF COMPLIANCE	REFERENCE/ PRODUCTION LAY-OUT
<ul style="list-style-type: none"> <li>• <b>Counter Top</b></li> </ul>		
<ul style="list-style-type: none"> <li>- <b>Material:</b> Synthetic Granite Countertop</li> </ul>		
<ul style="list-style-type: none"> <li>- <b>Dimensions:</b> (L) 2300mm x (W) 610mm x (H) 50mm with tolerance of (±10mm) in all dimensions</li> </ul>		
<ul style="list-style-type: none"> <li>- <b>Color:</b> Black</li> </ul>		
<ul style="list-style-type: none"> <li>• <b>Stand</b></li> </ul>		
<ul style="list-style-type: none"> <li>- <b>Material:</b> double-¾ inch thick Marine Plywood on Ducco Paint finish</li> </ul>		
<ul style="list-style-type: none"> <li>- <b>Dimensions:</b> (L) 36mm x (W) 510mm x (H) 1100mm with tolerance of (±10mm) in all dimensions</li> </ul>		
<ul style="list-style-type: none"> <li>- <b>Color:</b> Vibrant Yellow for 5 tables, silver gray for 6 tables</li> </ul>		
<ul style="list-style-type: none"> <li>• <b>Shelves</b></li> </ul>		
<ul style="list-style-type: none"> <li>- <b>Material:</b> single-¾ inch thk Marine Plywood on Ducco Paint finish</li> </ul>		
<ul style="list-style-type: none"> <li>- <b>Dimensions:</b> (L) 2200mm x (W) 510mm x (H) 200mm with tolerance of (±10mm) in all dimensions</li> </ul>		
<ul style="list-style-type: none"> <li>- <b>Color:</b> Vibrant Yellow for 5 tables, silver gray for 6 tables</li> </ul>		

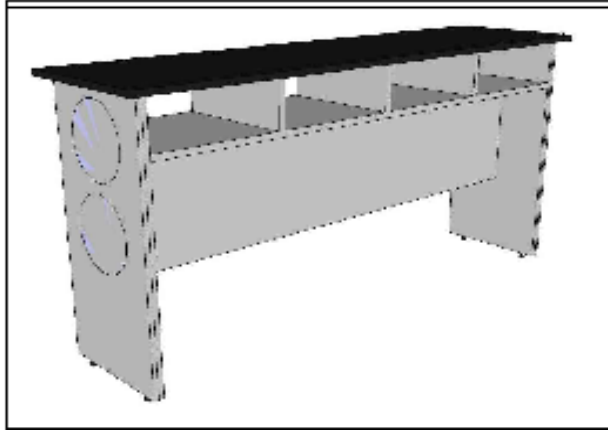
<ul style="list-style-type: none"> <li>• <b>Partition</b></li> </ul>		
<ul style="list-style-type: none"> <li>- <b>Material:</b> single-<sup>3</sup>/<sub>4</sub> inch thk Marine Plywood on Ducco Paint finish</li> </ul>		
<ul style="list-style-type: none"> <li>- <b>Dimensions:</b> (L) 2200mm x (W) 18mm x (H) 500mm with tolerance of (±10mm) in all dimensions</li> </ul>		
<ul style="list-style-type: none"> <li>- <b>Color:</b> Vibrant Yellow for 5 tables, silver gray for 6 tables</li> </ul>		
<ul style="list-style-type: none"> <li>• <b>Accessories</b></li> </ul>		
<ul style="list-style-type: none"> <li>- Three (3) sets of ball pen and ball pen holder</li> </ul>		
<ul style="list-style-type: none"> <li>- Four (4) pieces adjustable glider</li> </ul>		
<ul style="list-style-type: none"> <li>• <b>Warranty:</b> One year warranty on parts and service</li> </ul>		
<ul style="list-style-type: none"> <li>• Printing of the <b>DOH and BOQ logo</b> on both sides of the customized writing table in a white vinyl sticker. Each logo is 300mm in diameter and 700mm in length.</li> </ul>		

**I hereby certify that the statement of compliance to the foregoing technical specifications are true and correct, otherwise, if found to be false either during bid evaluation or post-qualification, the same shall give rise to automatic disqualification of our bid.**

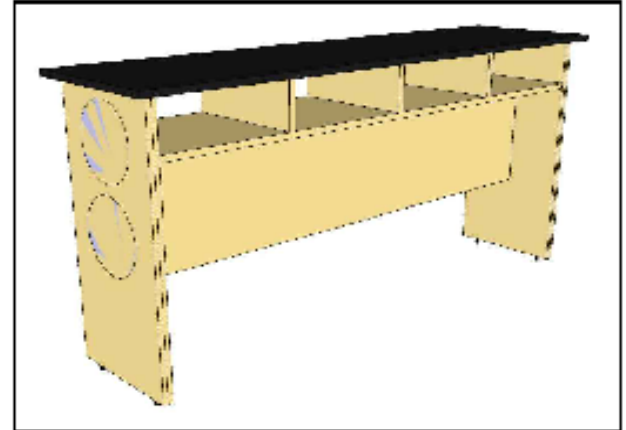
\_\_\_\_\_  
Name of Company / Bidder

\_\_\_\_\_  
Signature Over Printed Name of Authorized Representative

\_\_\_\_\_  
Date

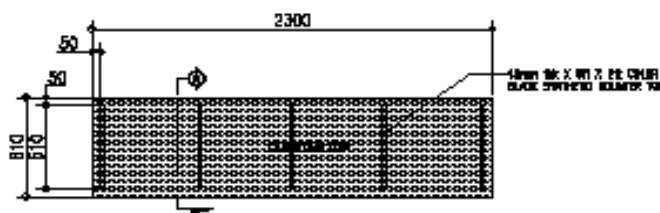


**SILVER GRAY DESK**

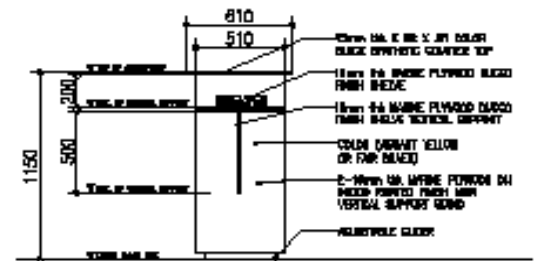


**VIBRANT YELLOW DESK**

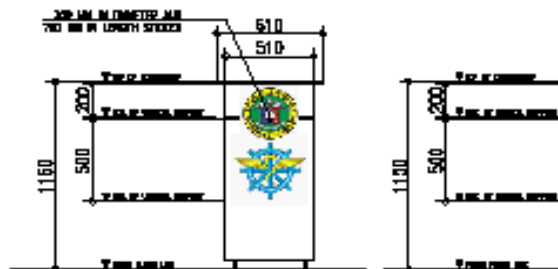
**PERSPECTIVE (2)**



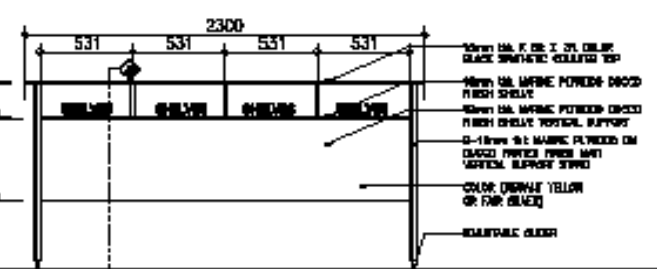
**WRITING DECK COUNTERTOP PLAN**  
SCALE: 1:30 METERS



**WRITING DECK SECTION THRU "A"**  
SCALE: 1:30 METERS



**WRITING DECK SIDE ELEVATION**  
SCALE: 1:30 METERS



**WRITING DECK FRONT ELEVATION**  
SCALE: 1:30 METERS

**ITEM NO. 3 : JUNIOR EXECUTIVE TABLE**

**QUANTITY : 26 units**

**ABC / UNIT : Php 5,500.00**

**ABC FOR THE ITEM : Php 143,000.00**

<b>AGENCY'S SPECIFICATIONS</b>	<b>BIDDER'S STATEMENT OF COMPLIANCE</b>	<b>REFERENCE</b>
<b>Brand and Model:</b>		
• Freestanding Table		
• Woodgrain laminated top (beige), 30mm thick with tolerance of ( $\pm 2$ mm)		
• Powder coated steel legs and panel		
• <b>Dimensions:</b> (W) 120cm x (D) 70cm x (H) 75cm with tolerance of ( $\pm 2$ cm) in all dimensions		
• With two wire management hole for cables and wires on two sides		
• <b>Table Top Thickness:</b> One (1) inch with flat and laminated edges		
• <b>Warranty:</b> One year warranty on parts and service		

**I hereby certify that the statement of compliance to the foregoing technical specifications are true and correct, otherwise, if found to be false either during bid evaluation or post-qualification, the same shall give rise to automatic disqualification of our bid.**

\_\_\_\_\_  
Name of Company /  
Bidder

\_\_\_\_\_  
Signature Over Printed  
Name of Authorized  
Representative

\_\_\_\_\_  
Date



**ITEM NO. 4 : SENIOR EXECUTIVE TABLE**

**QUANTITY : 24 units**

**ABC/ UNIT : Php 6,500.00**

**ABC FOR THE ITEM : Php 156,000.00**

<b>AGENCY'S SPECIFICATIONS</b>	<b>BIDDER'S STATEMENT OF COMPLIANCE</b>	<b>REFERENCE</b>
<b>Brand and Model:</b>		
• <b>Dimensions:</b> 150 cm. (W) x 70 cm. (D) x 75 cm. (H) with tolerance of (±2 cm.) in all dimensions		
• <b>Color:</b> beige or off-white		
• Freestanding Table		
• <b>Tabletop:</b> Melamine finish chipboard (MCF)		
• <b>Table Top Thickness:</b> One (1) inch with flat and laminated edges		
• Powder coated steel legs and panel		
• With two wire management hole for cables and wires on two sides		
• With glider		
• <b>Warranty:</b> One year warranty on parts and service		

**I hereby certify that the statement of compliance to the foregoing technical specifications are true and correct, otherwise, if found to be false either during bid evaluation or post-qualification, the same shall give rise to automatic disqualification of our bid.**

\_\_\_\_\_  
Name of Company /  
Bidder

\_\_\_\_\_  
Signature Over Printed  
Name of Authorized  
Representative

\_\_\_\_\_  
Date



**ITEM NO. 5 : JUNIOR EXECUTIVE CHAIR**

**QUANTITY : 26 units**

**ABC / UNIT : Php 3,200.00**

**ABC FOR THE ITEM : Php 83,200.00**

<b>AGENCY'S SPECIFICATIONS</b>	<b>BIDDER'S STATEMENT OF COMPLIANCE</b>	<b>REFERENCE</b>
<b>Brand and Model:</b>		
• Back Rest - Mesh		
• Seat Rest – Fabric, black		
• PVC Armrest		
• Five (5) stroke base, chrome leg		
• <b>Accessories:</b> Gas lift and caster wheel		
• <b>Warranty:</b> One year warranty on parts and service		

**I hereby certify that the statement of compliance to the foregoing technical specifications are true and correct, otherwise, if found to be false either during bid evaluation or post-qualification, the same shall give rise to automatic disqualification of our bid.**

\_\_\_\_\_  
Name of Company /  
Bidder

\_\_\_\_\_  
Signature Over Printed  
Name of Authorized  
Representative

\_\_\_\_\_  
Date





**ITEM NO. 6 : SENIOR EXECUTIVE CHAIR**

**QUANTITY : 24 units**

**ABC / UNIT : Php 5,000.00**

**ABC FOR THE ITEM : Php 120,000.00**

<b>AGENCY'S SPECIFICATIONS</b>	<b>BIDDER'S STATEMENT OF COMPLIANCE</b>	<b>REFERENCE</b>
<b>Brand and Model:</b>		
• <b>Back Rest:</b> High Back Mesh Chair		
• Seat rest (Leatherette)		
• With armrest		
• <b>Color:</b> Black		
• Five (5) stroke base, chrome leg		
• <b>Accessories:</b> Gas lift, caster wheels		
• <b>Warranty:</b> One year warranty on parts and service		

**I hereby certify that the statement of compliance to the foregoing technical specifications are true and correct, otherwise, if found to be false either during bid evaluation or post-qualification, the same shall give rise to automatic disqualification of our bid.**

\_\_\_\_\_  
Name of Company /  
Bidder

\_\_\_\_\_  
Signature Over Printed  
Name of Authorized  
Representative

\_\_\_\_\_  
Date



**ITEM NO. 7 : GLASS DISPLAY CABINET**

**QUANTITY : 7 units**

**ABC / UNIT : Php 17,307.00**

**ABC FOR THE ITEM : Php 121,149.00**

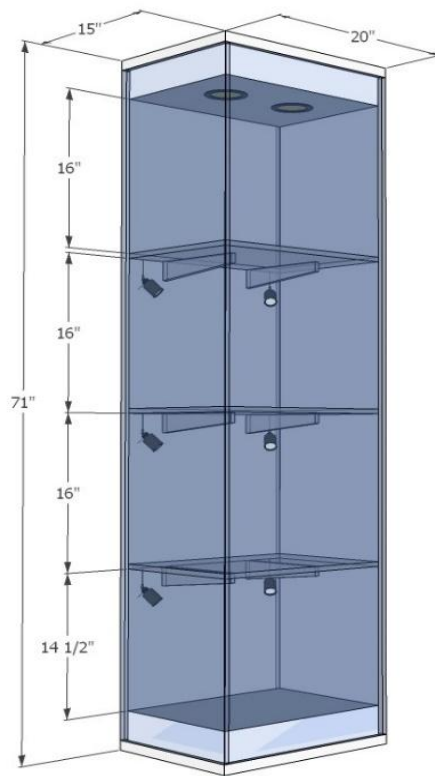
<b>AGENCY'S SPECIFICATIONS</b>	<b>BIDDER'S STATEMENT OF COMPLIANCE</b>	<b>REFERENCE</b>
<b>Brand and Model:</b>		
• <b>Dimensions:</b> 20" L x 15" W x 71" H with tolerance of (±2") in all dimensions		
• Top surface and bottom material: Wood or particle board, 4.25" (±0.25") thick each for top and bottom, white		
• Four (4) – layer glass shelves		
• Swing type Glass door with Lock set		
• Frameless		
• All glass materials should be at least 1/2" thick with tolerance of (±1/8")		
• Without wheels		
• Installed with LED lights – Four (4) top lights and Six (6) side lights (bottom to 3rd layer)		
• <b>Warranty:</b> One year warranty on parts and service		

**I hereby certify that the statement of compliance to the foregoing technical specifications are true and correct, otherwise, if found to be false either during bid evaluation or post-qualification, the same shall give rise to automatic disqualification of our bid.**

\_\_\_\_\_  
Name of Company /  
Bidder

\_\_\_\_\_  
Signature Over Printed  
Name of Authorized  
Representative

\_\_\_\_\_  
Date



**ITEM NO. 8 : HORIZONTAL FILING CABINET**

**QUANTITY : 9 units**

**ABC / UNIT : Php 16,500.00**

**ABC FOR THE ITEM : Php 148,500.00**

<b>AGENCY'S SPECIFICATIONS</b>	<b>BIDDER'S STATEMENT OF COMPLIANCE</b>	<b>REFERENCE</b>
<b>Brand and Model:</b>		
• <b>Dimension:</b> 18.25" D x 42" W x 65" H with tolerance of (±2") in all dimensions		
• <b>Color:</b> beige		
• <b>Three (3) Open shelves at the top with the following dimensions:</b> 45cm Depth x 90cm Length x 35.4cm Height with tolerance of (±2cm) in all dimensions		
• <b>Two (2) drawers at the bottom with the following dimensions:</b> 45cm Dep with tolerance of th x 90cm Length x 37cm Height (±2cm) in all dimensions		
• At least ¾" thick particle board with laminate		
• <b>Warranty:</b> One year warranty on parts and service		

**I hereby certify that the statement of compliance to the foregoing technical specifications are true and correct, otherwise, if found to be false either during bid evaluation or post-qualification, the same shall give rise to automatic disqualification of our bid.**

\_\_\_\_\_  
Name of Company /  
Bidder

\_\_\_\_\_  
Signature Over Printed  
Name of Authorized  
Representative

\_\_\_\_\_  
Date



**ITEM NO. 9 : FIVE (5) DRAWER LATERAL FILE CABINET**

**QUANTITY : 7 units**

**ABC / UNIT : Php 20,000.00**

**ABC FOR THE ITEM : Php 140,000.00**

<b>AGENCY'S SPECIFICATIONS</b>	<b>BIDDER'S STATEMENT OF COMPLIANCE</b>	<b>REFERENCE</b>
<b>Brand and Model:</b>		
• <b>Dimension:</b> 67" H x 42" W x 19" D with tolerance of (±2") in all dimensions		
• Five (5) drawers with centralized lock		
• <b>Color:</b> beige		
• Powder coated finish		
• Steel plate, at least Gauge 20		
• <b>Warranty:</b> One year warranty on parts and service		

**I hereby certify that the statement of compliance to the foregoing technical specifications are true and correct, otherwise, if found to be false either during bid evaluation or post-qualification, the same shall give rise to automatic disqualification of our bid.**

\_\_\_\_\_  
Name of Company /  
Bidder

\_\_\_\_\_  
Signature Over Printed  
Name of Authorized  
Representative

\_\_\_\_\_  
Date





**ITEM NO. 10 : SIX DOOR LOCKER**

**QUANTITY : 8 units**

**ABC / UNIT : Php 15,384.00**

**ABC FOR THE ITEM : Php 123,072.00**

<b>AGENCY'S SPECIFICATIONS</b>	<b>BIDDER'S STATEMENT OF COMPLIANCE</b>	<b>REFERENCE</b>
<b>Brand and Model:</b>		
• <b>Dimension:</b> 88cm W x 51cm D x 178cm H with tolerance of ( $\pm 2$ cm) in all dimensions		
• Steel, at least Gauge 20		
• With shoe rack, standard size that is commercially available		
• With hanger rod		
• With lock set and padlock		
• <b>Color:</b> Off white		
• <b>Warranty:</b> One year warranty on parts and service		

**I hereby certify that the statement of compliance to the foregoing technical specifications are true and correct, otherwise, if found to be false either during bid evaluation or post-qualification, the same shall give rise to automatic disqualification of our bid.**

\_\_\_\_\_  
Name of Company /  
Bidder

\_\_\_\_\_  
Signature Over Printed  
Name of Authorized  
Representative

\_\_\_\_\_  
Date



**ITEM NO. 11 : STEEL CABINET**

**QUANTITY : 5 units**

**ABC / UNIT : Php 8,495.00**

**ABC FOR THE ITEM : Php 42,475.00**

<b>AGENCY'S SPECIFICATIONS</b>	<b>BIDDER'S STATEMENT OF COMPLIANCE</b>	<b>REFERENCE</b>
<b>Brand and Model:</b>		
• <b>Dimension:</b> 51" H x 18.5" W x 28.5" D with tolerance of (±2") in all dimensions		
• Steel Cabinet, at least Gauge 20		
• Four (4) drawers with centralized locking mechanism, complete with lock, duplicate keys & card holders and comes with built-in handles		
• Top compartment is with a safe or vault with combination lock, insulated with insulyte perlite powder and cement		
• Lower drawers are fully suspended on local steel bearings, standard and legal size		
• <b>Color:</b> Light gray		
• Enamel painted		
• <b>Warranty:</b> One year warranty on parts and service		

**I hereby certify that the statement of compliance to the foregoing technical specifications are true and correct, otherwise, if found to be false either during bid evaluation or post-qualification, the same shall give rise to automatic disqualification of our bid.**

\_\_\_\_\_  
Name of Company /  
Bidder

\_\_\_\_\_  
Signature Over Printed  
Name of Authorized  
Representative

\_\_\_\_\_  
Date



**ITEM NO. 12** : **THREE (3) DRAWER LATERAL FILE CABINET**  
**QUANTITY** : **14 units**  
**ABC / UNIT** : **Php 11,495.00**  
**ABC FOR THE ITEM** : **Php 160,930.00**

AGENCY'S SPECIFICATIONS	BIDDER'S STATEMENT OF COMPLIANCE	REFERENCE
<b>Brand and Model:</b>		
<ul style="list-style-type: none"> <li>• <b>Dimension:</b> 900mm W x 450mm D x 1026mm H with tolerance of (±50mm) in all dimensions</li> </ul>		
<ul style="list-style-type: none"> <li>• Three (3) drawers with centralized lock</li> </ul>		
<ul style="list-style-type: none"> <li>• Powder coated Finish</li> </ul>		
<ul style="list-style-type: none"> <li>• Steel plate material, at least gauge 20</li> </ul>		
<ul style="list-style-type: none"> <li>• <b>Color:</b> beige</li> </ul>		
<ul style="list-style-type: none"> <li>• Drawers are fully suspended on local steel bearings, standard and legal size</li> </ul>		
<ul style="list-style-type: none"> <li>• <b>Warranty:</b> One year warranty on parts and service</li> </ul>		

**I hereby certify that the statement of compliance to the foregoing technical specifications are true and correct, otherwise, if found to be false either during bid evaluation or post-qualification, the same shall give rise to automatic disqualification of our bid.**

\_\_\_\_\_  
 Name of Company / Bidder

\_\_\_\_\_  
 Signature Over Printed  
 Name of Authorized Representative

\_\_\_\_\_  
 Date



**ITEM NO. 13 : MOBILE PEDESTAL**

**QUANTITY : 54 units**

**ABC / UNIT : Php 2,884.00**

**ABC FOR THE ITEM : Php 155,736.00**

<b>AGENCY'S SPECIFICATIONS</b>	<b>BIDDER'S STATEMENT OF COMPLIANCE</b>	<b>REFERENCE</b>
<b>Brand and Model:</b>		
• With Three (3) drawers including one (1) central lock, one (1) pen tray, one (1) file divider		
• Material: Steel with powder coating		
• <b>Color:</b> beige / off white		
• With four (4) wheels		
• <b>Warranty:</b> One year warranty on parts and service		

**I hereby certify that the statement of compliance to the foregoing technical specifications are true and correct, otherwise, if found to be false either during bid evaluation or post-qualification, the same shall give rise to automatic disqualification of our bid.**

\_\_\_\_\_  
Name of Company /  
Bidder

\_\_\_\_\_  
Signature Over Printed  
Name of Authorized  
Representative

\_\_\_\_\_  
Date





**ITEM NO. 14 : THREE (3) SEATER OFFICE SOFA**

**QUANTITY : 6 units**

**ABC / UNIT : Php 34,615.00**

**ABC FOR THE ITEM : Php 207,960.00**

<b>AGENCY'S SPECIFICATIONS</b>	<b>BIDDER'S STATEMENT OF COMPLIANCE</b>	<b>REFERENCE</b>
<b>Brand and Model:</b>		
• <b>Dimensions:</b> at least 2000mm L x 900mm depth with tolerance of ( $\pm 50$ mm) in all dimensions		
• <b>Materials and finishes:</b> fabric upholstered, zippered loose seat and backrest cushions. Solid KD wood base in wengue stain finish, semi-gloss lacquer topcoat		
• With left and right side arm		
• With Leatherette Cover, Black in color		
• <b>Warranty:</b> One year warranty on parts and service		

**I hereby certify that the statement of compliance to the foregoing technical specifications are true and correct, otherwise, if found to be false either during bid evaluation or post-qualification, the same shall give rise to automatic disqualification of our bid.**

\_\_\_\_\_  
Name of Company /  
Bidder

\_\_\_\_\_  
Signature Over Printed  
Name of Authorized  
Representative

\_\_\_\_\_  
Date

